

AstraZeneca and Sodexo

Supporting and
developing the workplace
through a pandemic



AstraZeneca

- Purpose is to push the boundaries of science to deliver life-changing medicines.
- **9,000 employees** in the UK.
- **6 locations** in the UK including our Global HQ.
- UK Sites focus mainly on R&D, manufacturing and global support functions.
- In April 2020, AZ formed a partnership with the University of Oxford, to provide broad and equitable access to the COVID-19 vaccine for as many countries as possible at no profit during the pandemic.
- AZ has an agreement with the UK Government for the supply of 100 million doses.



“A global pharmaceutical company with a **major UK presence**”

Macclesfield Campus - Largest pharmaceutical production campus in the UK

101 acres = 70
football
pitches

Unique science
'hub'

Manufacturing

Brilliant facilities and
services.
Great place
to work!

A year in the
life on
campus...

>100 major
engineering
projects

Generated enough
power for 30,000
homes

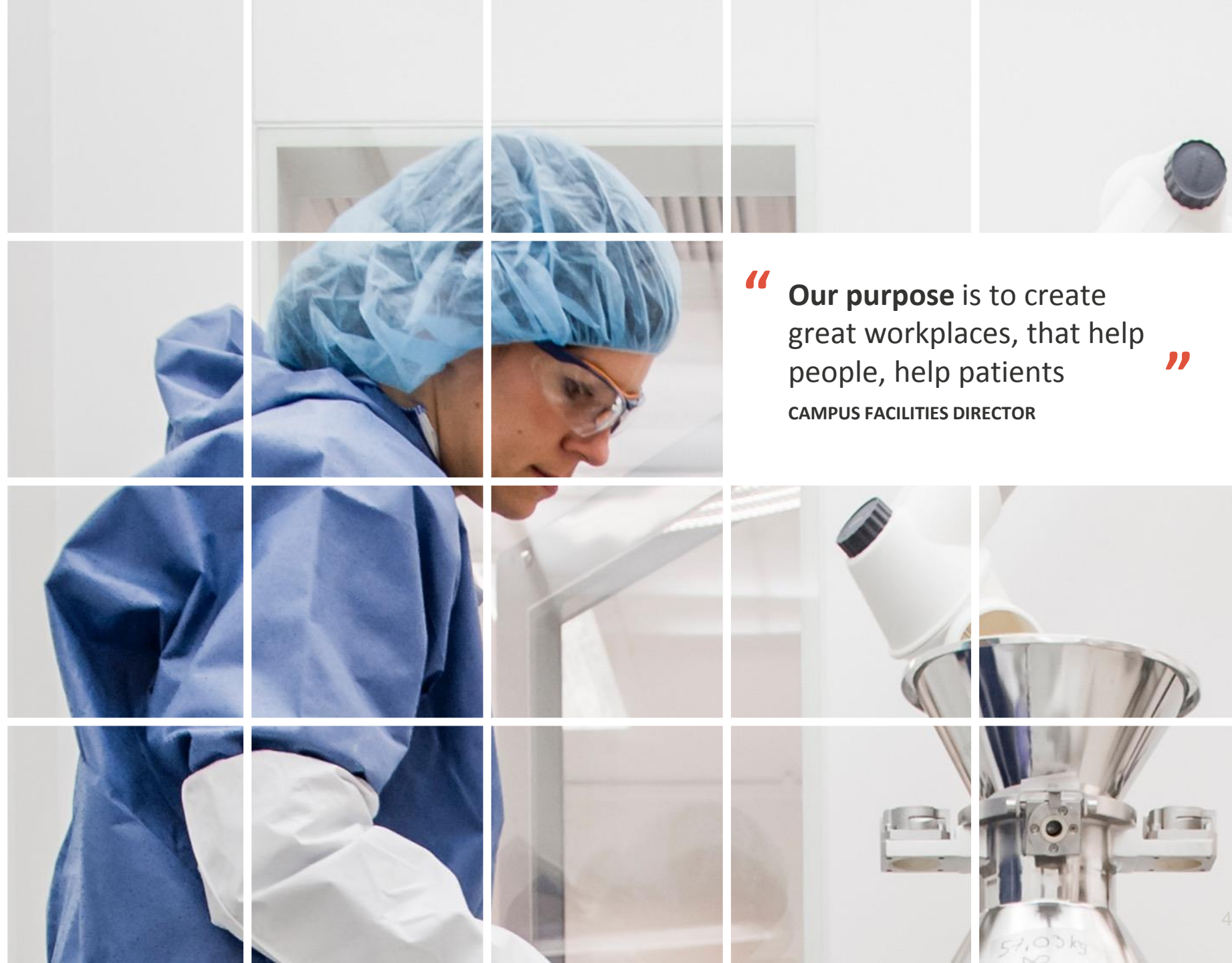
34,696
cups of
barista
coffee served

11,400
scheduled
FM work
orders/PPM's

Our vision:

- Macclesfield campus is recognised as an amazing place to work.
- Inspired by helping people, help patients, the campus FM team are highly innovative, delivering reliable, efficient; assets, services and projects.
- By 2025 our workplace will be recognised as; zero carbon, a leader in sustainability, safety and wellbeing.

“ **Our purpose** is to create great workplaces, that help people, help patients ”
CAMPUS FACILITIES DIRECTOR



AstraZeneca and Sodexo partnership

2008

Awarded Food
& Soft Service

2010

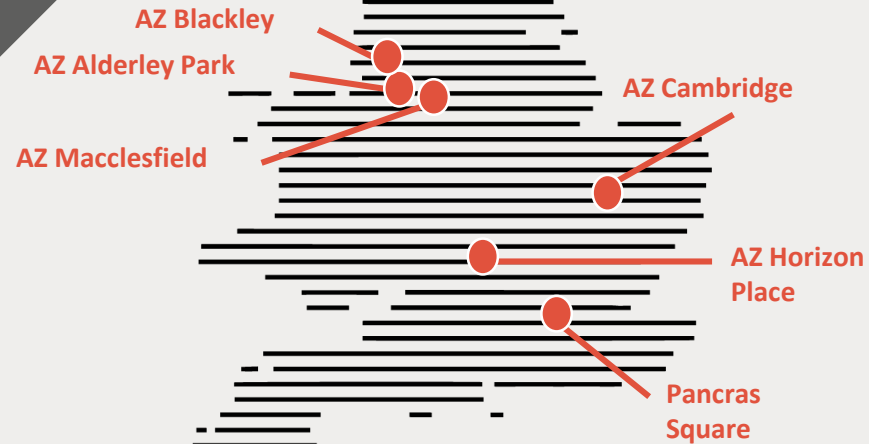
IFM services at
global HQ

2012

IFM services
UK estate
Soft service
Sweden estate

To 2023

Together
Stronger
Partnership



Global contract

UK – Scope IFM, Since 2008

Nordics – Bundled soft food and FM, since 2012

APAC – Scope IFM (China), Hard/Food (India), since 2011

AstraZeneca workplace challenges in Covid-19

- Maintaining the production of medicines for our patients.
- Keeping our people safe – a COVID-19 secure workplace.
- The implementation of COVID-19 employee safety measures.
- Business continuity – creating production/COVID-19 safe bubbles.
- Ensuring AZ remains a great place to work.
- Agile solutions to enable remote working.
- To continue supporting our local community and charity partners.



How Sodexo supported AZ in Macclesfield

COVID-19 response

- Facilitating COVID-19 assessment centres
- Sanitisation
- Agile working – critical service resilience
- Mobilising testing labs/facilities
- Sodexo global supply chain
- HR app and people tracking
- RISE with Sodexo



Revised/new onsite services

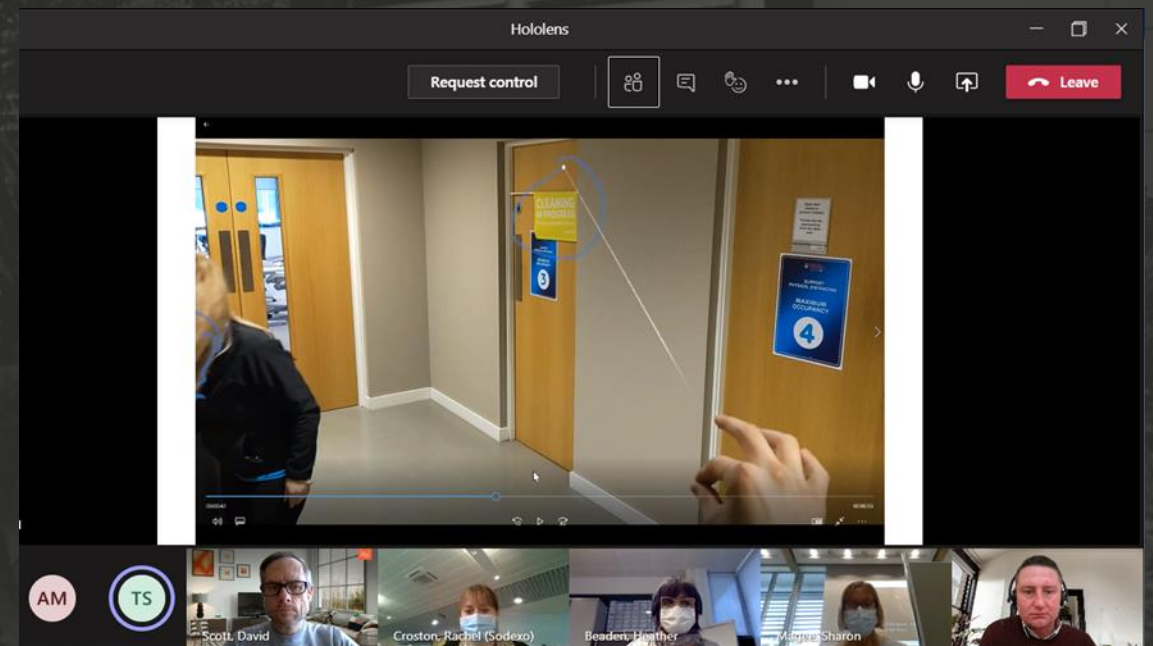
- Food services – digital ordering
- Lockdown production food delivery
- Enhanced cleaning

Supporting the community

- Supporting the community and NHS
- Local foodbanks
- Corporate charities

How will the workplace change for AZ?

- Maximising real estate whilst delivering new hybrid working models.
- Crowdsourcing:
 - What do our teams want to see.
 - Attracting people back to the workplace.
 - Flexibility.
- Workplaces services that attract and support a world class workforce.
- A sustainable workplace.




Vital Spaces



 **WorkPlace
Strategy**

 **WorkPlace
Design**

 **WorkPlace
Management**

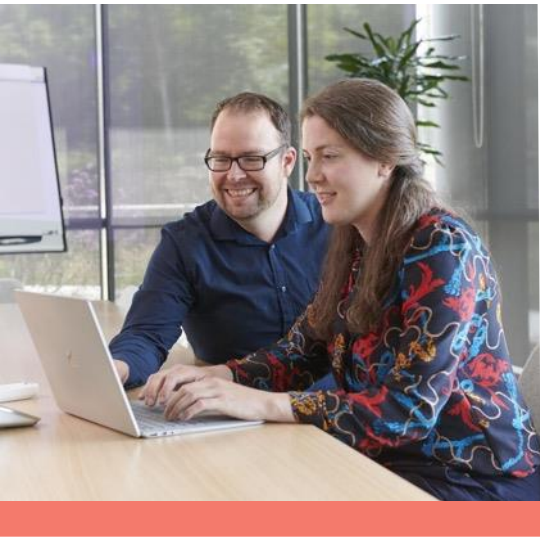
 **WorkLife
Services**

 **WorkPlace
Technology &
Analytics**

Vital Spaces brings together **everything** Sodexo can offer to **empower you** to transform **your workplace**, plan for shifting futures and get the best out of **your spaces** and **your people**.



Vital Spaces - workplace evolution at AZ



WorkPlace Strategy



WorkPlace Design

Together Stronger Partnership – part of AZ 'Great Place to Work' wider team

Energy and Sustainability Consulting – Carbon Zero 2025 Vision



WorkPlace Management

Continued COVID Safety measures to enable customer RTW confidence



WorkLife Services

Agile food services
Virtual employee concierge
Employee wellbeing



WorkPlace Technology & Analytics

Applying latest tech to support consumer experience and business intelligence

Underpinned by strategic partnership... and commitment to social value



- Renewed commitment to strategic partnership
- Ongoing commitment to social value, sustainability and community
- Driving efficiencies and eliminating waste



Thank you