



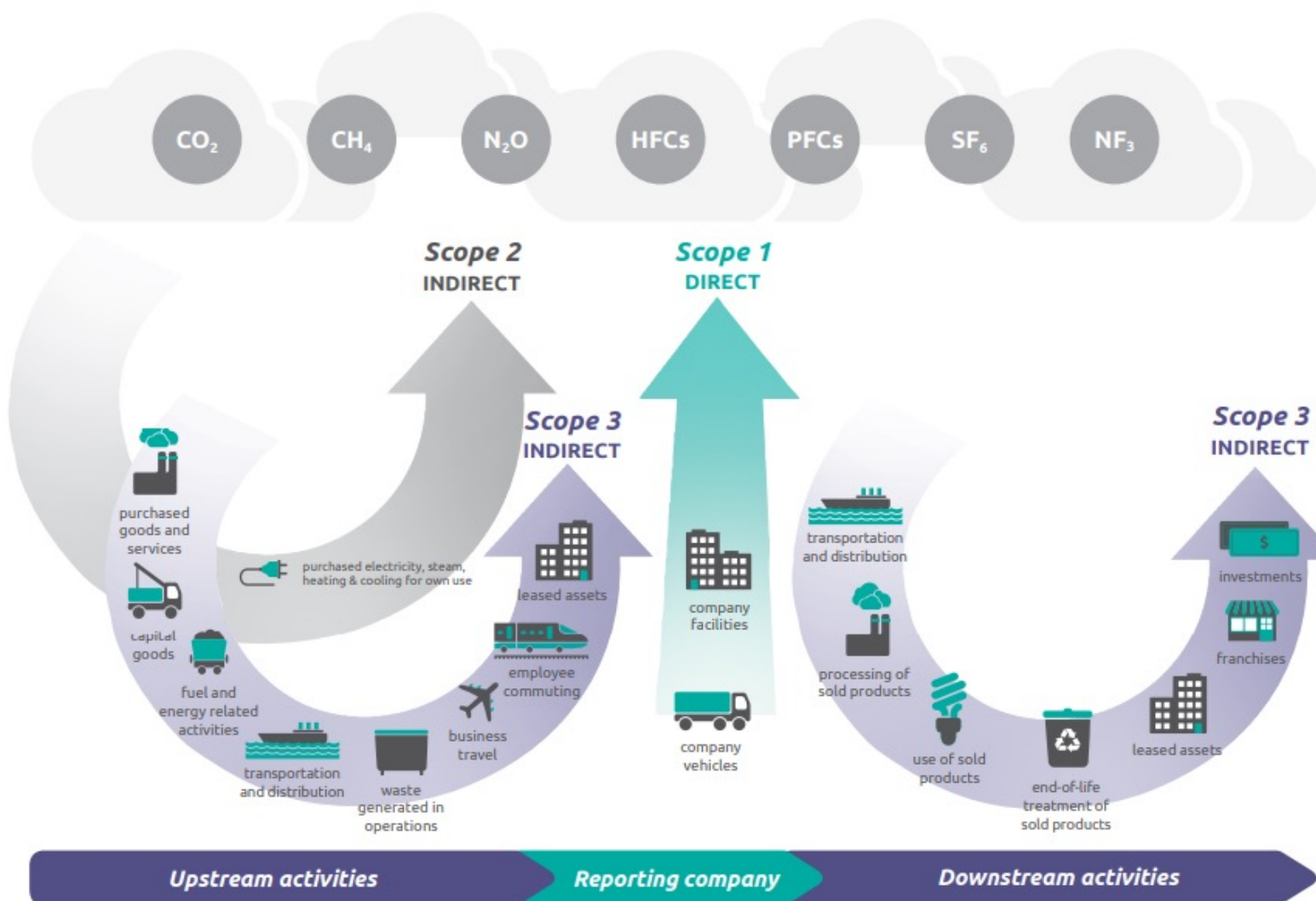
Building a sustainable tomorrow

The measurement challenge: demonstrating success

BAM FM & BAM Energy



Scope 1, 2 and 3



Source: GHG Protocol Technical Guidance for Calculating Scope 3 Emissions (version 1.0)

BAM FM – Scope

Type	Description	Source of Data	Where Data is Stored
Scope 1	Internal source data needed to convert direct purchases into a value in tonnes of carbon/GHGs	Gas, fuel data / invoices Transport and fuel records	Corporate procurement, finance, estates management or sustainability
Scope 2	Supplied source data needed to convert direct purchases into a value in tonnes of carbon/GHGs	Electricity (grid) data / invoices	
Scope 3	Multiple sources and types of data incl; Upstream suppliers/processes + Downstream use of products and services.	Supply chain (services and materials) Employees Customers	Corporate human resources, procurement, finance, estates management or sustainability + Supply chain (reported to individual contracts/customers) + Product /service lifecycle

Scope and boundaries

Carbon Neutral (also referred to as Net Zero CO₂ Emission or Net Zero Carbon)

Definition: Carbon neutrality is achieved when an organisation's carbon dioxide (CO₂) emissions are balanced CO₂ removal mechanisms over a specified period.

Carbon neutrality is also referred to as Net-Zero CO₂ emission.

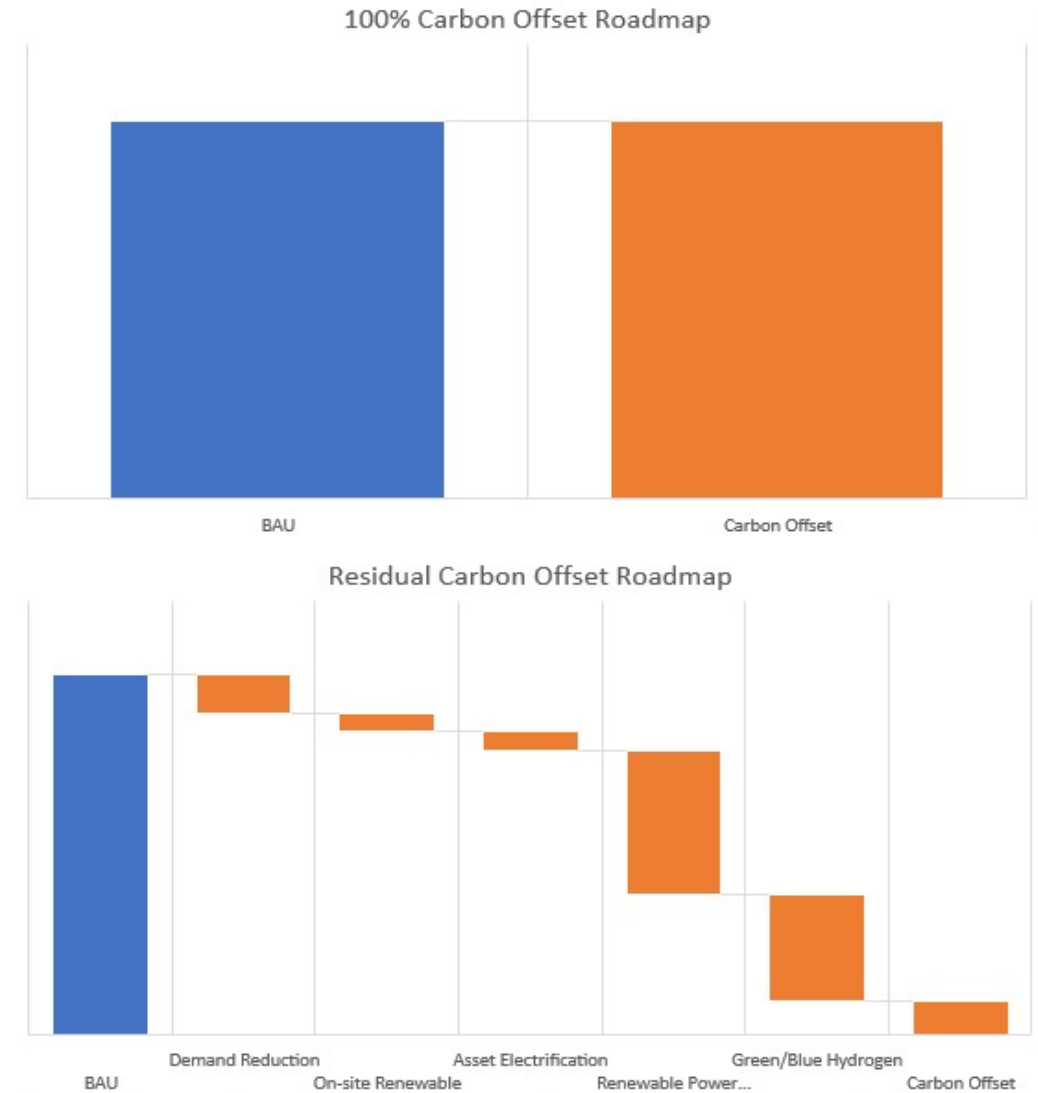
Boundary: Minimum requirement of Scope 1 & 2 emissions with Scope 3 emissions encouraged

Verification: PAS 2060, the internationally applicable specification for the demonstration of carbon neutrality.

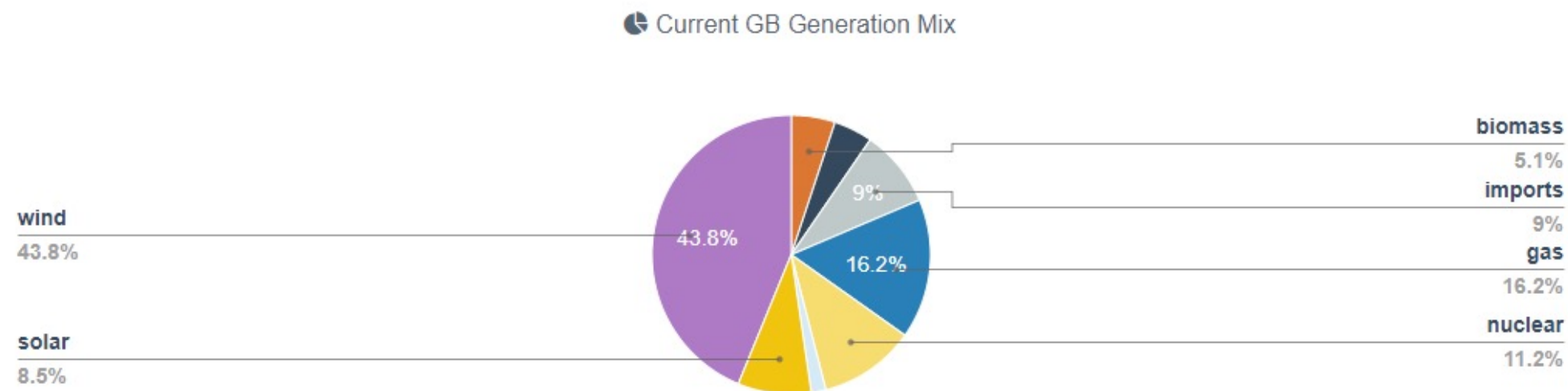
Product: Carbon Neutral Roadmap (CNR)

If the organisation is able to remove more than it emits then it becomes **Carbon Negative** or **Climate Positive**

Similar principle applies to a building under construction and if achieved can be referred to as **Net Zero Carbon Building**



BAM FM – Scope 2



nationalgridESO



DEPARTMENT OF
COMPUTER
SCIENCE



BAM FM – Scope 2

WWF have implemented the API into a re-usable widget that can help people plan their energy use, switching devices on when energy is green and off when it's not.



(VH = Very high carbon, H = High carbon, M = Moderate, L = Low carbon, VL = Very low carbon)

BAM FM – Scope 2

#	Region	Forecast Carbon Intensity (gCO ₂ /kWh)	Index
1	North Scotland	0	very low
2	South Scotland	7	very low
3	North East England	11	very low
4	North West England	41	very low
5	North Wales & Merseyside	48	low
6	East England	61	low
7	South West England	67	low
8	Yorkshire	87	low
9	London	89	low
10	South East England	95	low
11	West Midlands	127	low
12	South England	204	moderate
13	South Wales	259	high
14	East Midlands	313	very high

Scope and boundaries

Net Zero (according to SBTi)

Definition: Net Zero is achieved when organisation's emissions of all Green House Gases, collectively known as CO₂ equivalent (CO₂e) are balanced by GHG removals over a specified period.

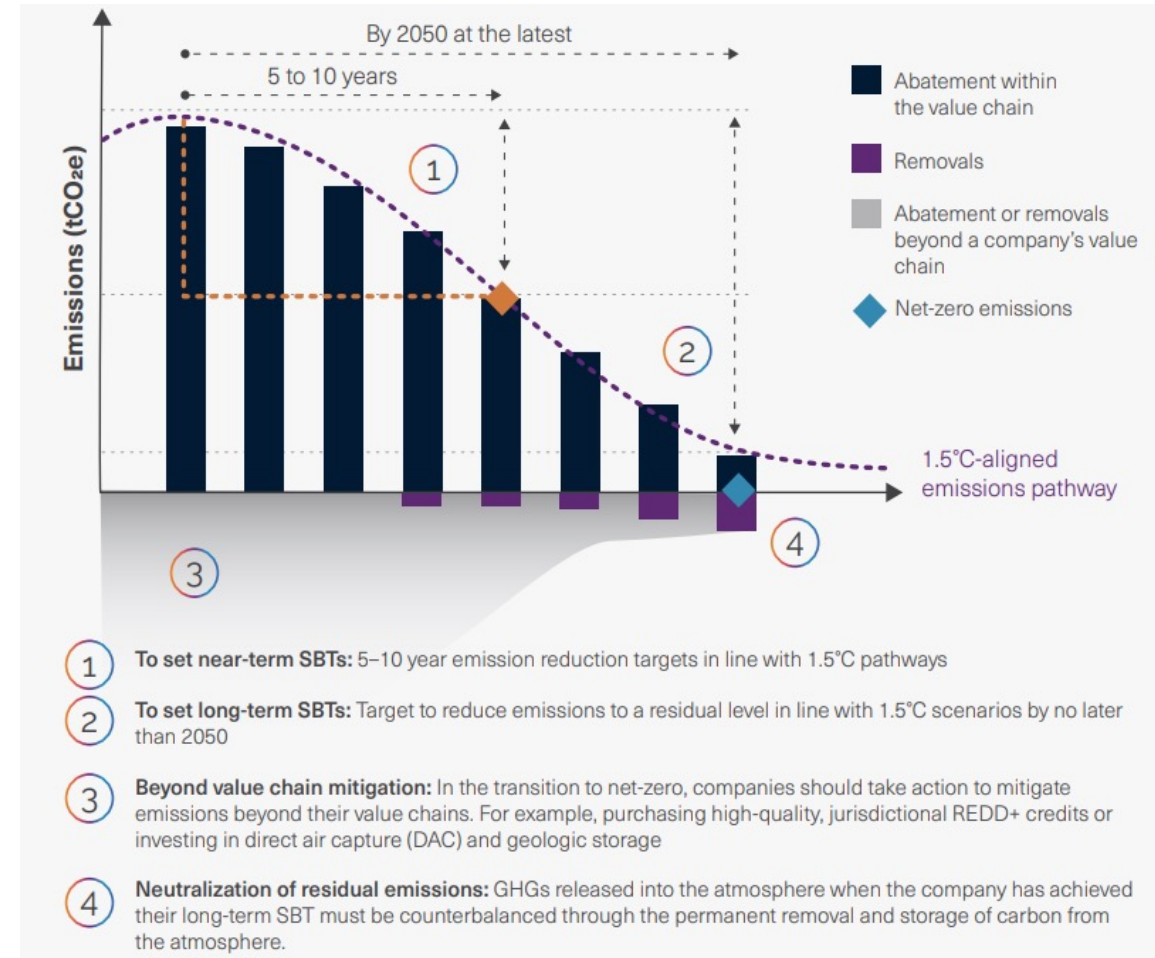
Key requirements:

1. Rapid and deep cuts to value chain emissions (around 90-95% to reach Net Zero standard)
2. Near term target to halve emissions by 2030 and close to zero by 2050. No net zero claims until the long term targets are met
3. Go beyond the value chain if possible
4. Neutralise the residual that are not impossible to eliminate

Boundary: Must cover all Scope 1, Scope 2 and Scope 3 Emissions

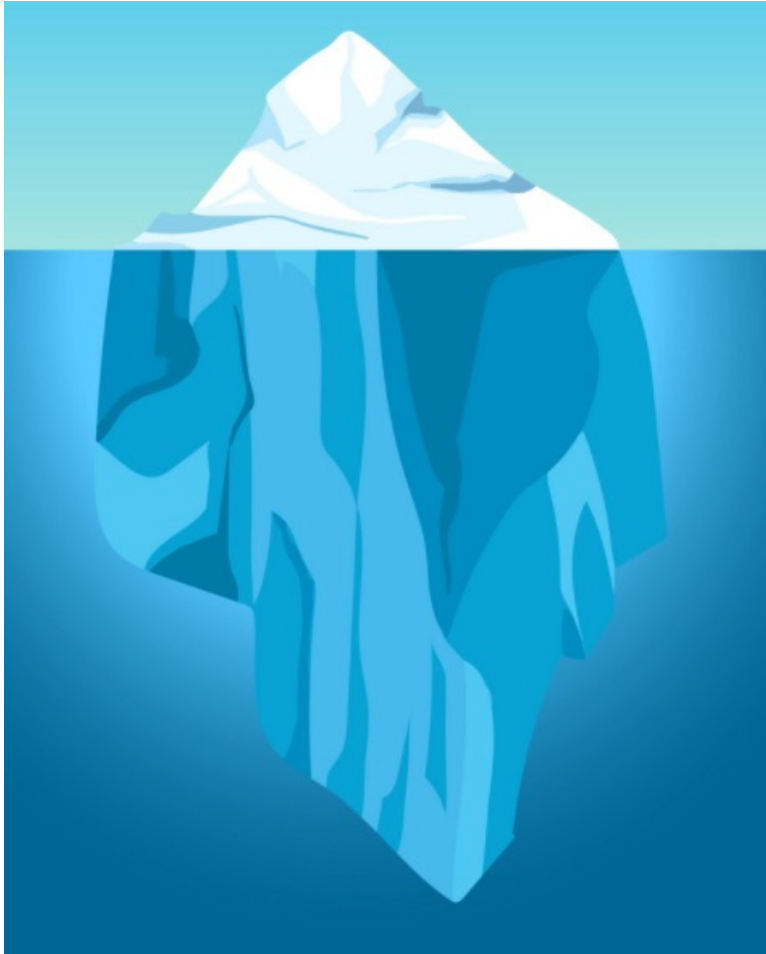
Verification: Science Based Target Initiative (SBTi) Net Zero Standard helps the organisation to align their Net Zero climate near-term targets with science to stay within 1.5°C global warming.

Product: Net Zero Roadmap (NZR)



Source: SBTi Corporate Net-Zero Standard (version 1.0)

BAM FM – Scope 1, 2 and 3



Scope 1 & 2

Typically 10% to 40% of an organisation's GHG emissions (estimated)

Scope 3

Typically 60% to 90% of an organisation's GHG emissions (estimated)

Scope 3 Emissions - BAM FM Partnership with SFMI

- Part one – ‘Scope 3 Emissions in FM Services Setting the Standard’
(Published - Nov 2021)
Available here;
<https://www.acclaro-advisory.com/sfmi-scope-3-emissions-in-fm-report-one/>
- Part two – guidance for FM industry based on GHG Protocol and 15 existing scope 3 ‘categories’
(Published - early in 2022)



Live Webinar

Scope 3 Emissions in FM
Setting the standard

Part one

25th November 2021 14:00-15:00

 **SFMI**
The Sustainable FM Index

 **bam**
fm


Chris Havers
Project Director
SFMI


Sunil Shah
Managing Director
Acclaro Advisory


Louise Williamson
Managing Director
BAM FM


Reid Cunningham
Strategic Development
Director
BAM FM


Karl Desai
Senior Advisor
Advancing Net Zero
UKGBC

Scope 3 Emissions - Approach

1. BAM FM lead partner
2. SFMI lead author
3. Professional institutions & Reviewing Panel incl.
 - a) Professional institutions
 - b) FM peer group
 - c) FM customer organisations



SFMI
The Sustainable FM Index



SKANSKA



UBS



NatWest Group

Source: SBTi Corporate Net-Zero Standard (version 1.0)

our
sustainable
tomorrow
starts today