



cadline

a vinzero™ company

vinzero™

Nigel Warrick, Head of Digital Workplace

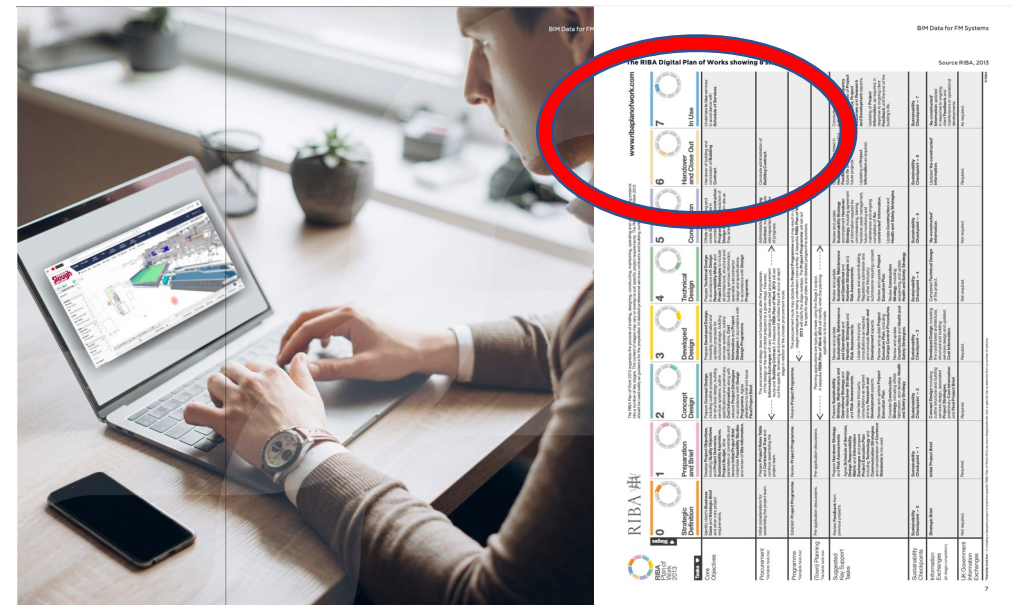
Connecting the Digital Workplace

Joining the dots



The built environment (design, construct and build) produces an incredible amount of digital data. But a recent study of digital data established that **95.5% of all data captured goes unused** in the engineering and construction industries*.

In response to what is both a challenge and an opportunity, leading companies are now implementing data-driven strategies to create better solutions, improve efficiency, serve customers or suppliers effectively, and increase ROI.



Good practice guide

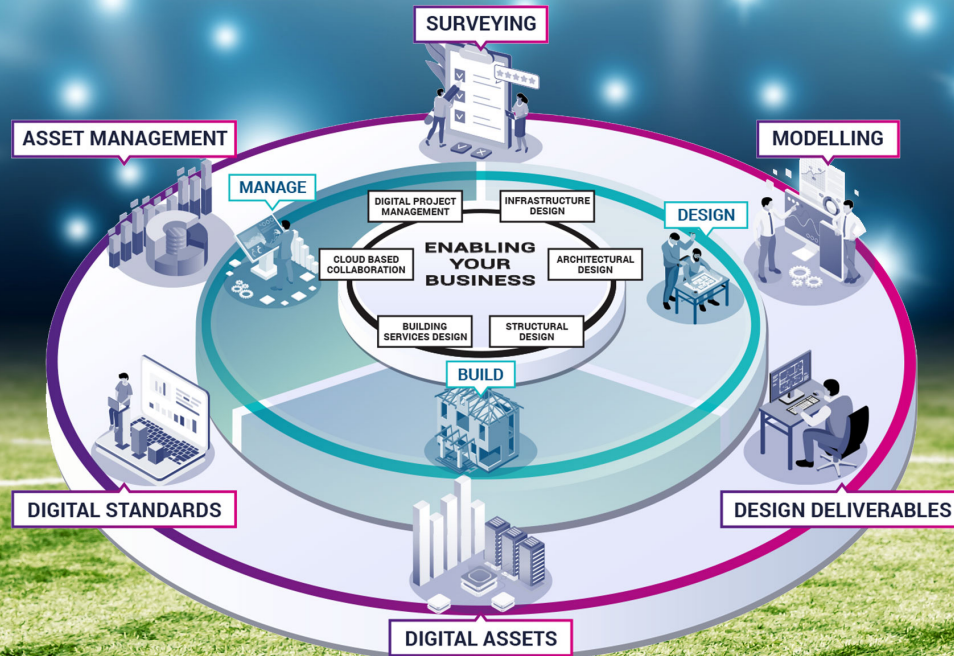
Is your Digital Workplace Connected?

it is becoming difficult for organisations to source, retain and develop quality tech-savvy staff with the width of experience to meet the current and future digital transformation journey.

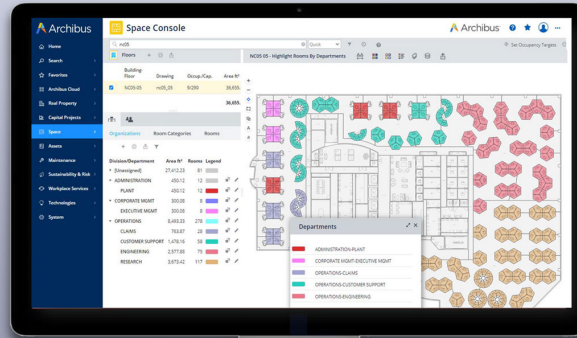
What do you need to consider?



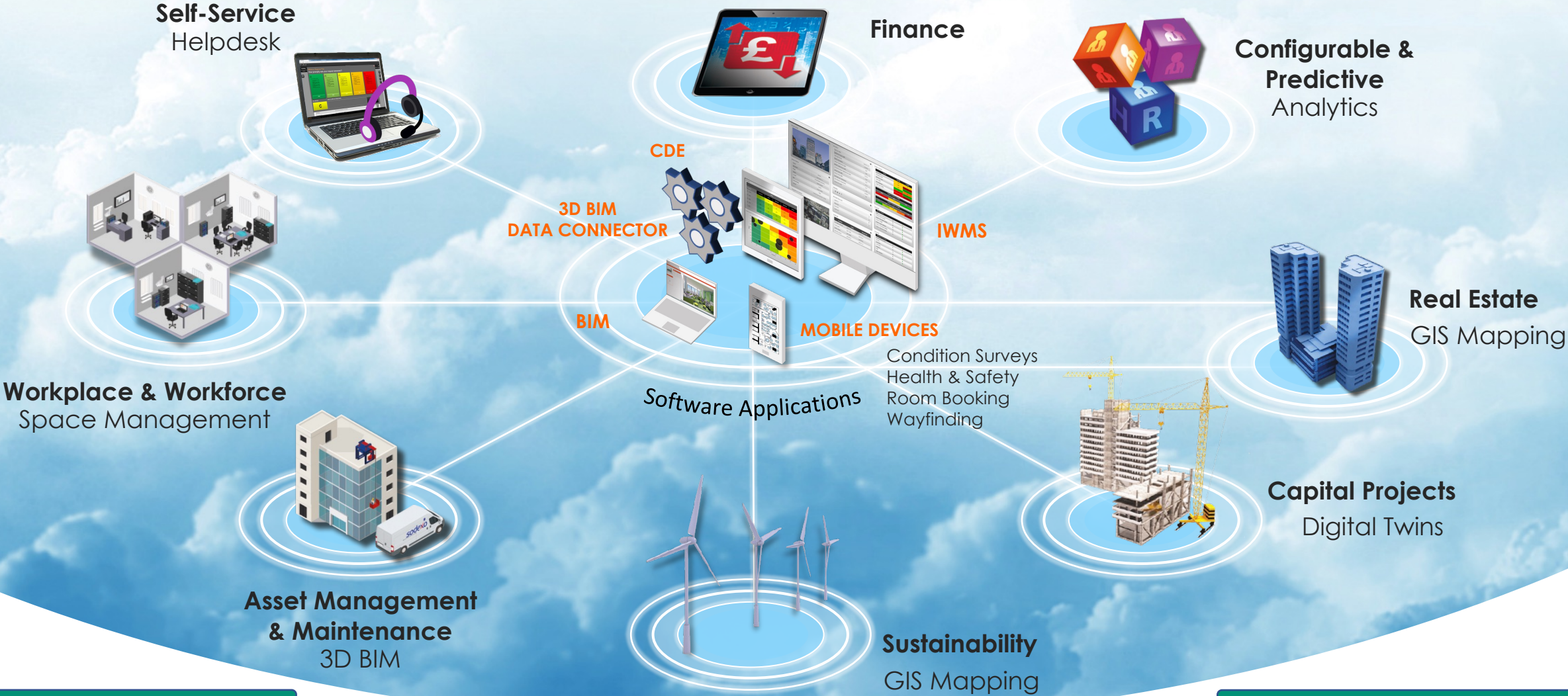
SUPPORTING YOUR PROJECTS







IWMS Digital Workplace Solutions



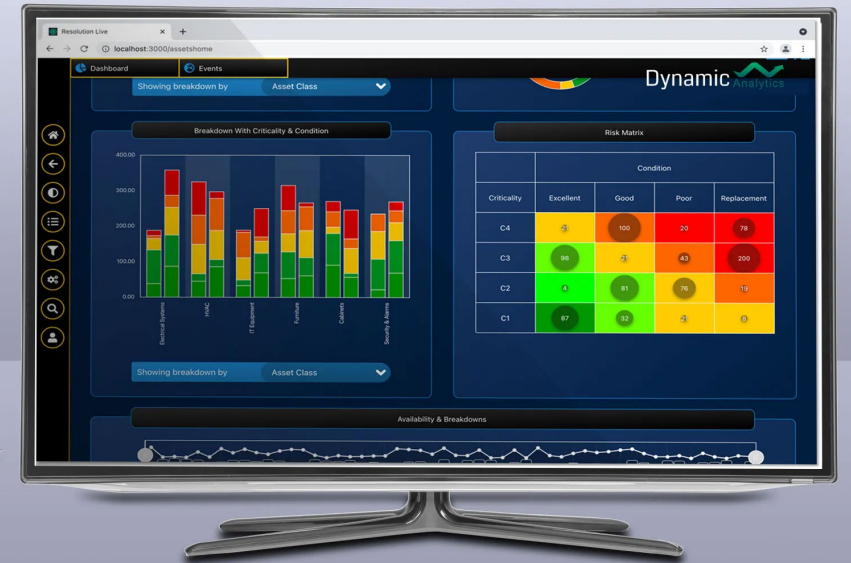
IWMS Implementation Methodology

IWMS Green Quadrant



ADE
Whitepaper



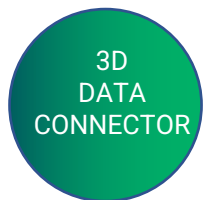






Areas of expertise summary

Delivering Digital Products, software and services across the entire Enterprise Asset Management eco system



Expert **Advisors**



Experts in **Workplace Solutions**



Experts in **Specialised Intelligence**



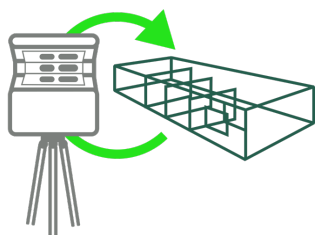
Experts in **Asset Data Environments**



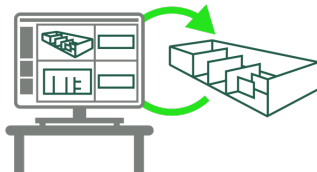
Experts in **AUTODESK Construction Cloud**



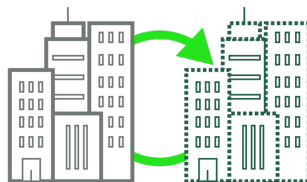
Experts in **GIS**



Experts in **3D Scanning**



Experts in **BIM**



Experts in **Digital Twins**



Experts in **Virtual Reality**



Experts in **3D Visualisation**

digitalization

allows us to

achieve

more

by using less

vinzero™

Your digitalization and net zero partner