

# Riding the Technology Rollercoaster



# Navigating the Corporate Jungle



**THE NEW NORMAL**

## How working from home is changing Britain

Studies suggest a typical week in the office now runs from Tuesday to Thursday, so could this be the end of the 9-5?

BBC News

## Could floating solar farms survive out at sea?

10 January



GETTY IMAGES

Getting electricity to all of Indonesia's islands is challenging

By Emma Woollacott

Technology of Business reporter

Indonesia is a nation of more than 10,000 islands, so supplying the whole country with electricity is a huge challenge.

NEWS

Business | Your Money | Market Data | Companies

## Have we fallen out of love with voice assistants?

5 days ago

SUCCESS BY DESIGN TRAINING

09:15

## Microsoft Outlook and Teams down for thousands around world

15 minutes ago

**BREAKING**

Thousands of users around the world have reported that they are unable to access Microsoft services, including Teams and Outlook.

Downdetector, which tracks websites, showed more than 5,000 people in the UK had reported that email service Outlook was inaccessible.

Other services including Teams and Xbox Live were also reported as being non-functional.

bbc.co.uk

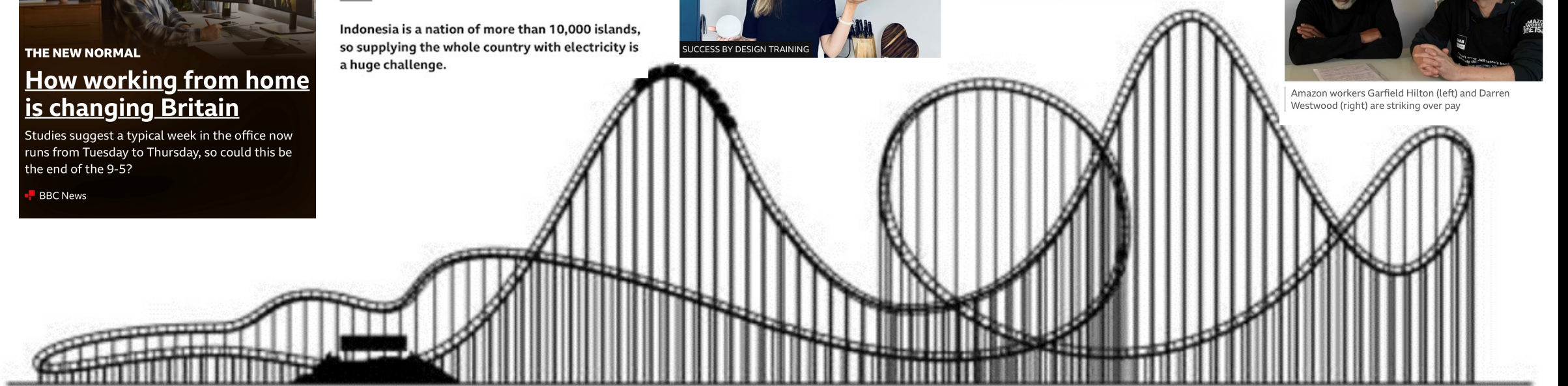
NEWS

Business | Your Money | Market Data | Companies

## Amazon strikes: Workers claim robots are treated better

1 hour ago

Amazon workers Garfield Hilton (left) and Darren Westwood (right) are striking over pay





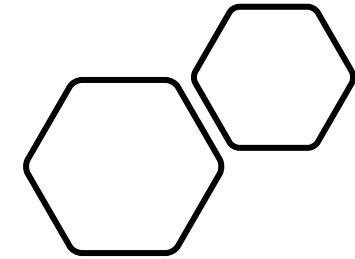
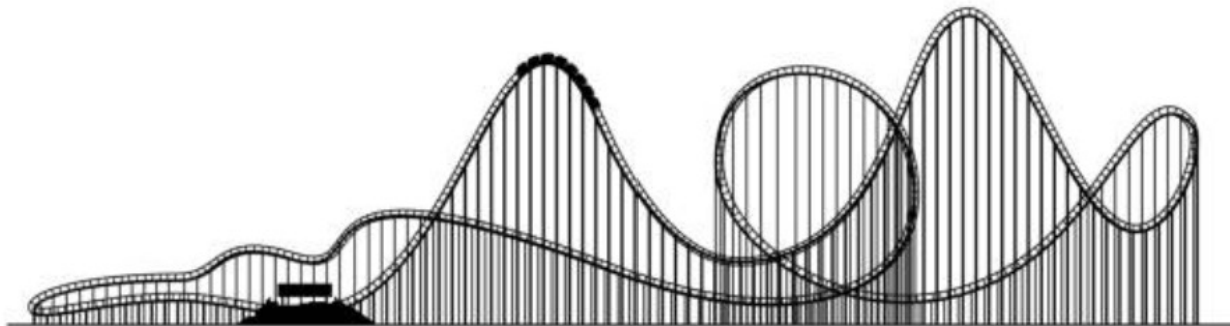
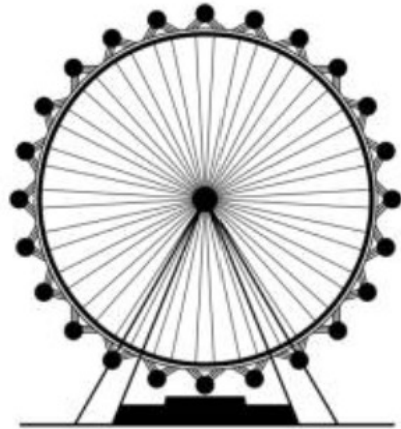
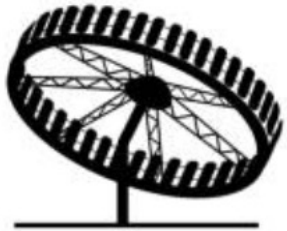
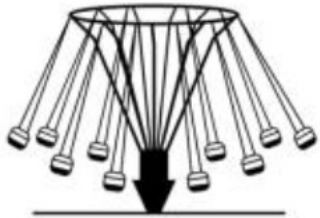
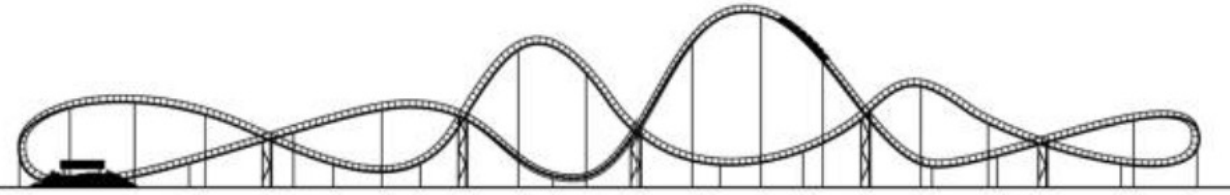






**Algorithms are simply  
about data – corporate  
decision making is not  
simply about data**





Technology used  
as supplement -  
not replacement  
for corporate  
(human)  
interaction.

# The Corporate Perspective





Henri Rousseau  
1891



**Secure  
Private  
Accessible**

**(Tapping into the  
emotional)**



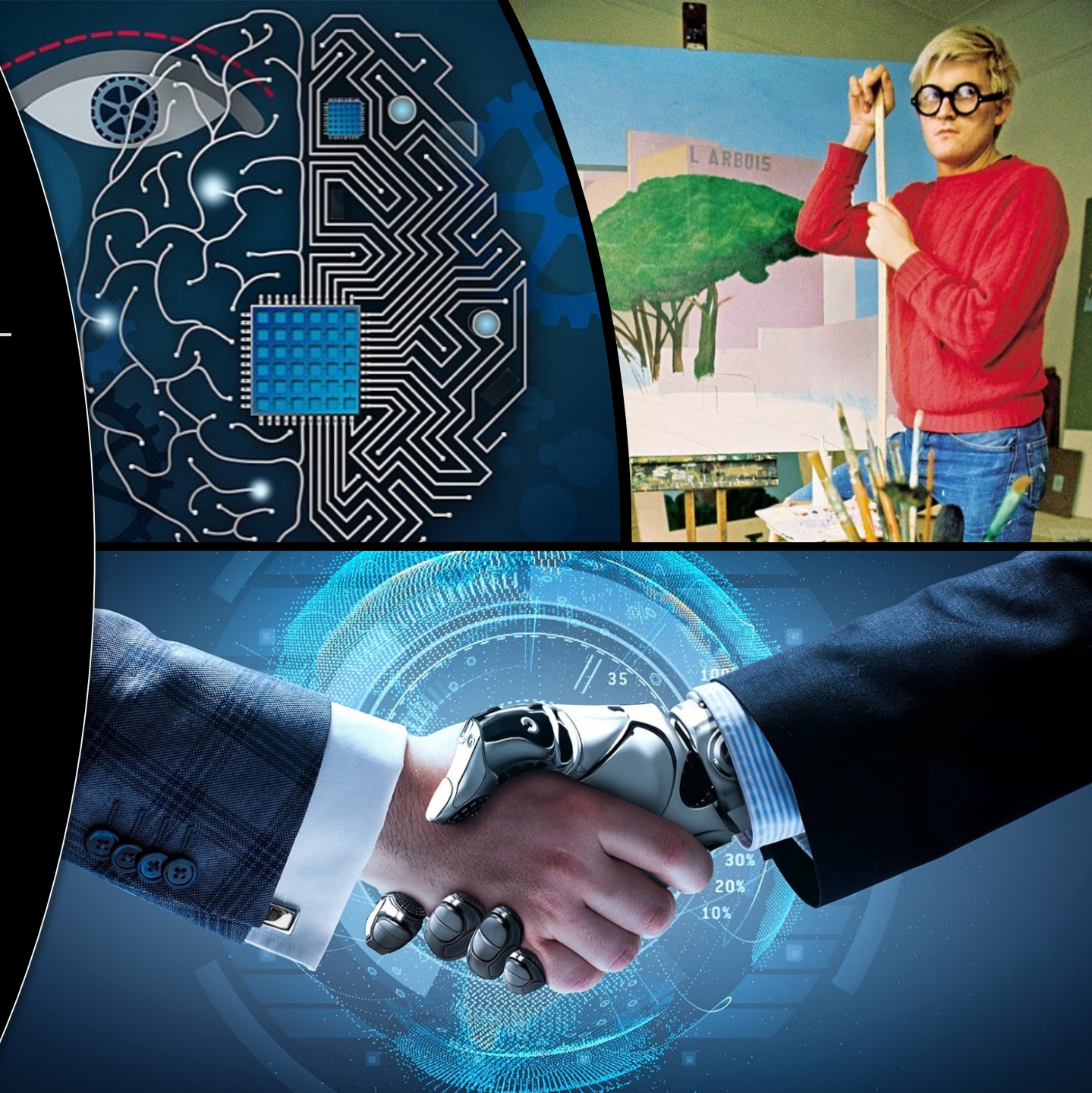


# Rollercoaster & Jungle

Corporate Interface (Infrastructure & FM)

Use of technology in business both costly and beneficial.

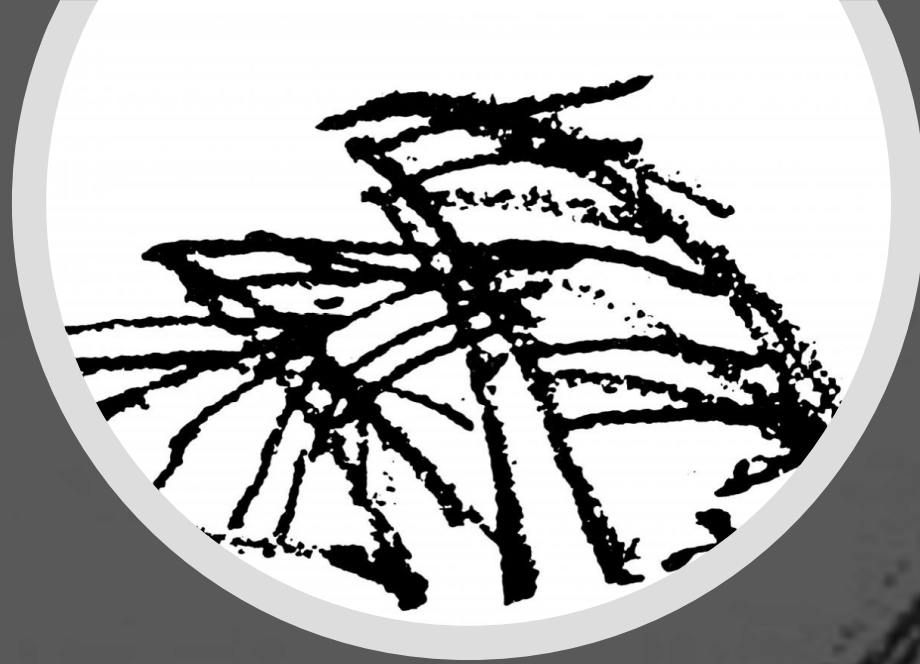
Businesses increasingly weigh potential **relationship v cost v benefit** before making any decisions about investing in new technology.











# Jorn Utzon's Preliminary Design Sketch of the Sydney Opera House





