



## People, Animals & Technology: a symbiotic relationship

ZSL | LONDON ZOO



# A protected community



London Zoo is committed to providing a safe and secure environment for its staff, visitors, and animals.



# Unique challenges

The zoo presented a variety of challenges, including the following:

The sheer size (27,000 sq ft) and openness of the site, including a large perimeter

High volumes of visitors

Balancing security and the customer experience

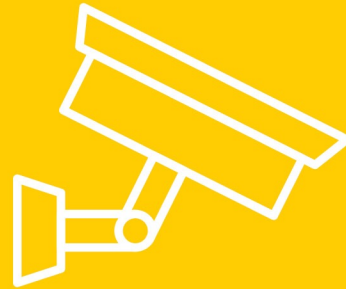
Effective risk mitigation without being excessive



# Time for an update



**CCTV security  
provision at the zoo**



**The site's security  
against intrusion and  
illegal activity**







## What we have done

Amulet engineers were brought in to install a state-of-the-art CCTV system that:

Utilised the existing IT infrastructure at the zoo

Employed the latest technology







# More than just safety and security

In addition to public safety:

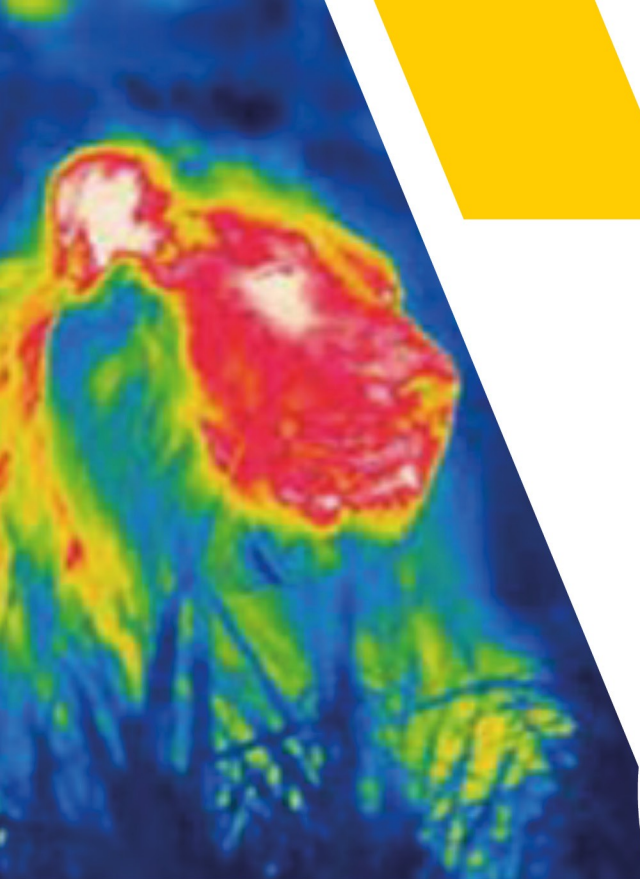
Installation of  
CCTV behind  
the scenes

New scope  
for monitoring  
animal welfare

New scope to  
monitor animal  
behaviour for  
conservation  
benefits







## More to come...



What more can we do when we use technology to enhance what is being done?

Enhanced  
visitor  
experiences

Enhanced  
educational  
benefits

